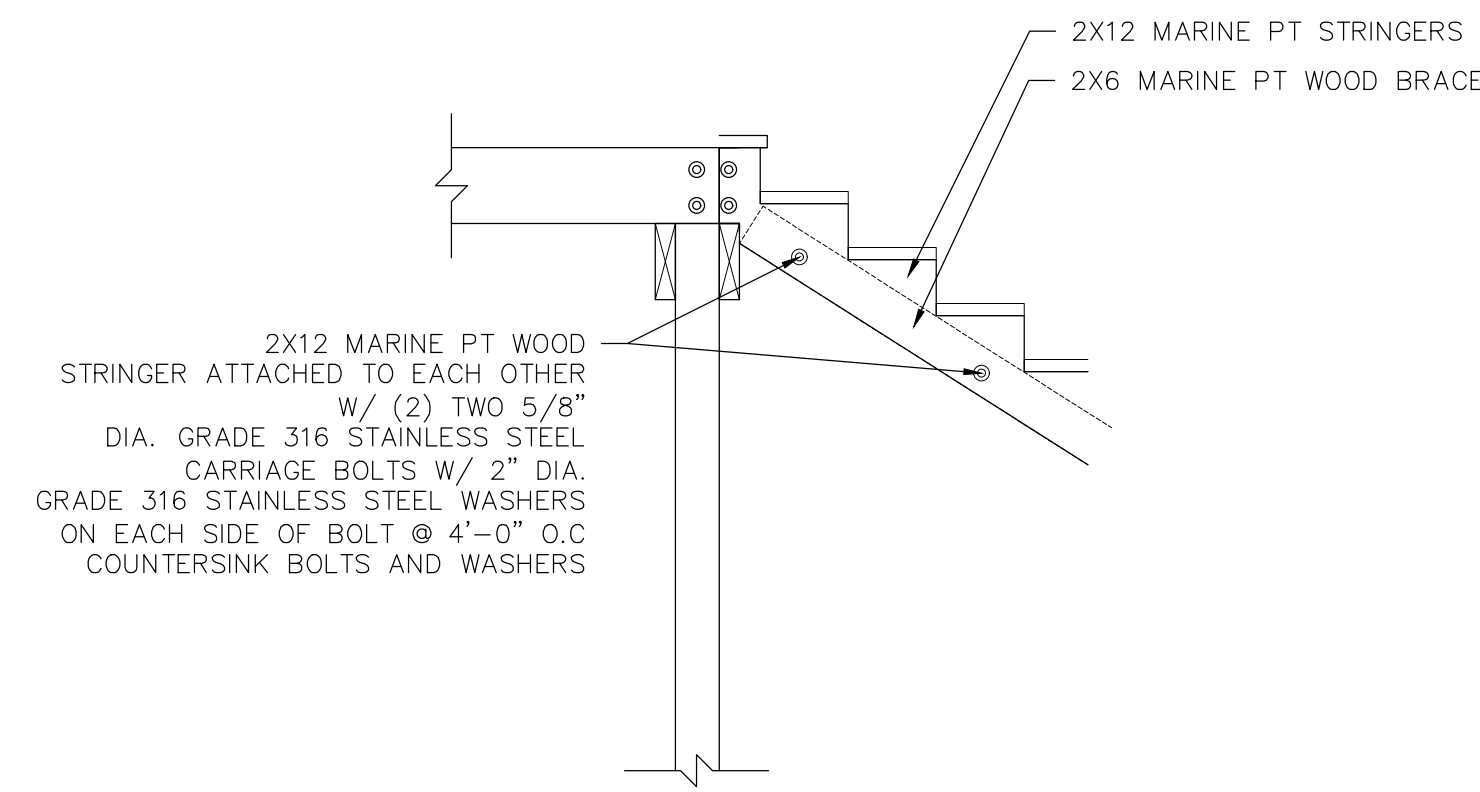
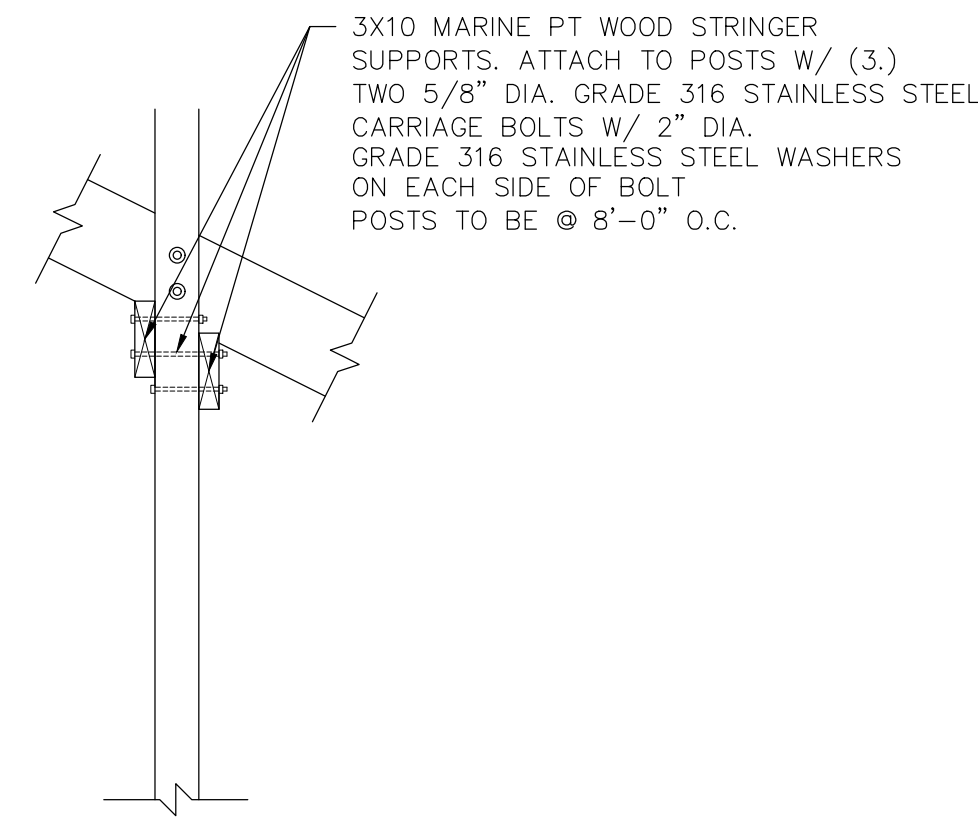


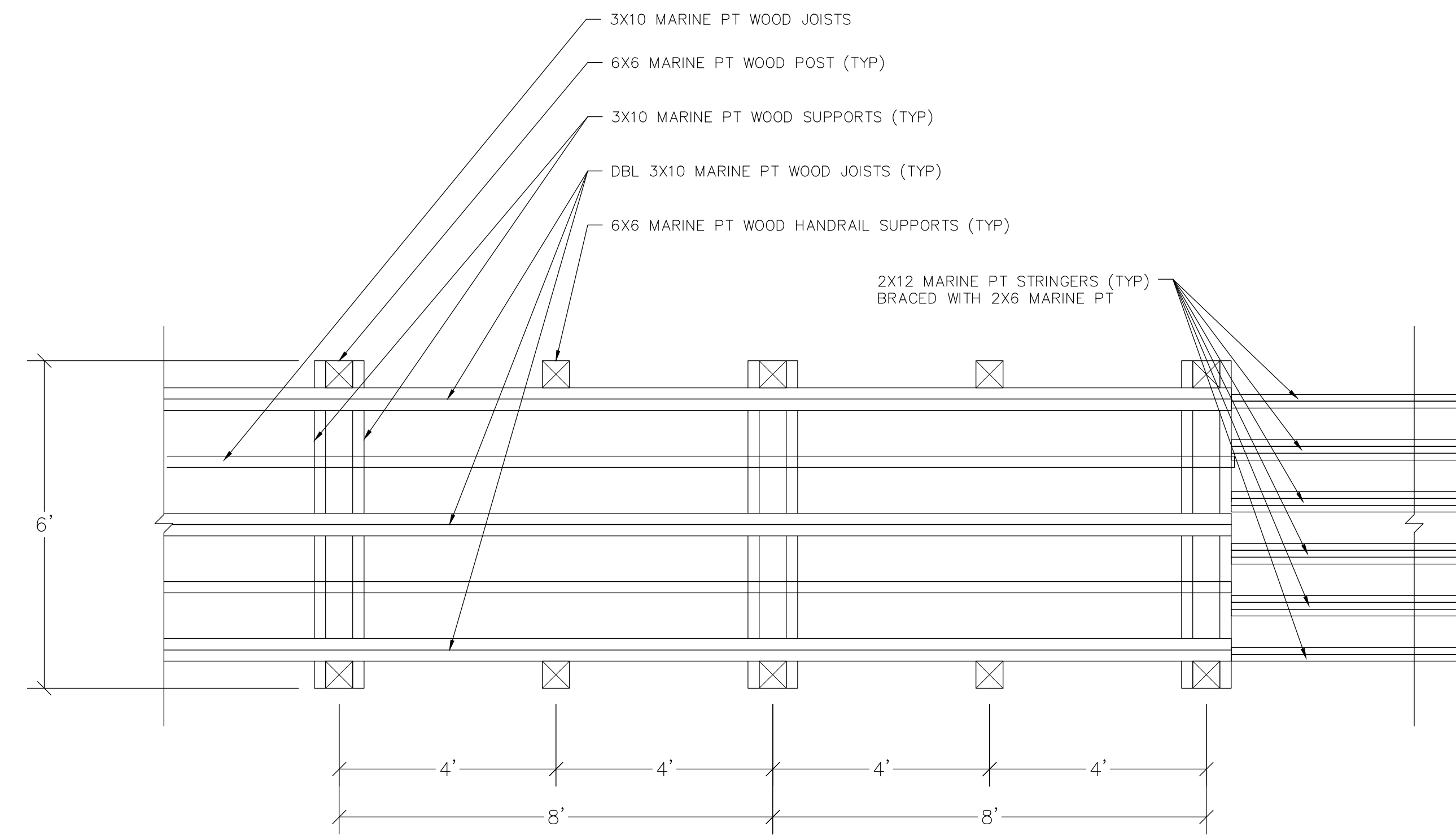
- NOTES:
- ALL STRUCTURES TO BE A MINIMUM OF 3'-0" ABOVE SAND DUNES
 - ALL STRUCTURES TO BE A MINIMUM OF 3'-0" ABOVE ROCK REVETMENT
 - LENGTH OF POSTS TO BE DETERMINED BY CONTRACTOR
 - TOTAL NUMBER OF STAIR TREADS/RISERS TO BE DETERMINED BY CONTRACTOR (MIN. 2 TREADS BELOW THE EXISTING SAND TO ALLOW FOR SAND SHARING)
 - ALL FASTENERS TO BE GRADE 316 STAINLESS STEEL
 - DECKING AND RAILS TO BE ATTACHED WITH GRADE 316 STAINLESS STEEL SCREWS
 - ALL LUMBER TO BE MARINE GRADE PRESSURE TREATED
 - ALL EARTH CONTACT POSTS TO EXTEND A MIN. 4' BELOW GRADE



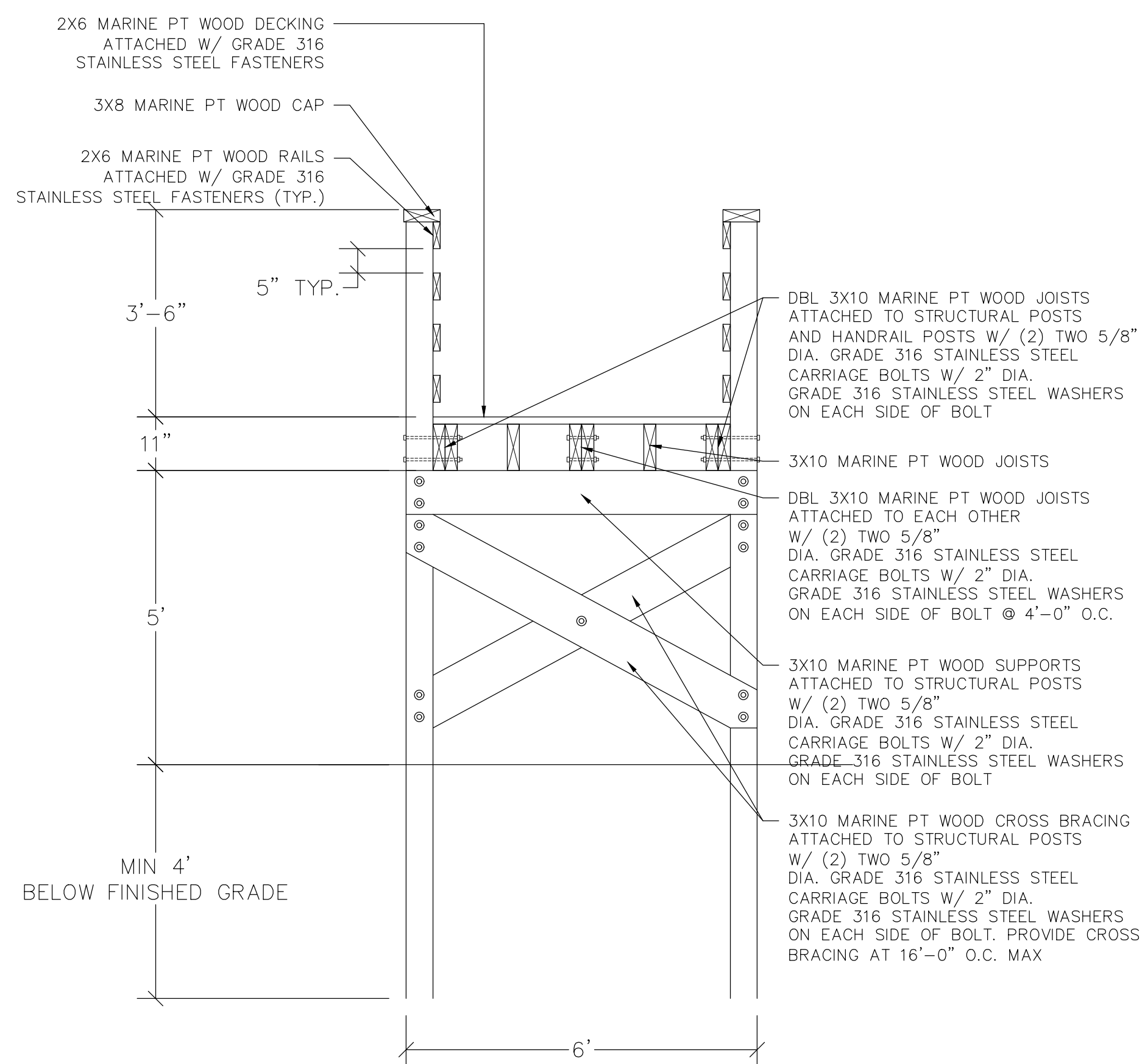
TYPICAL STRINGER DETAIL



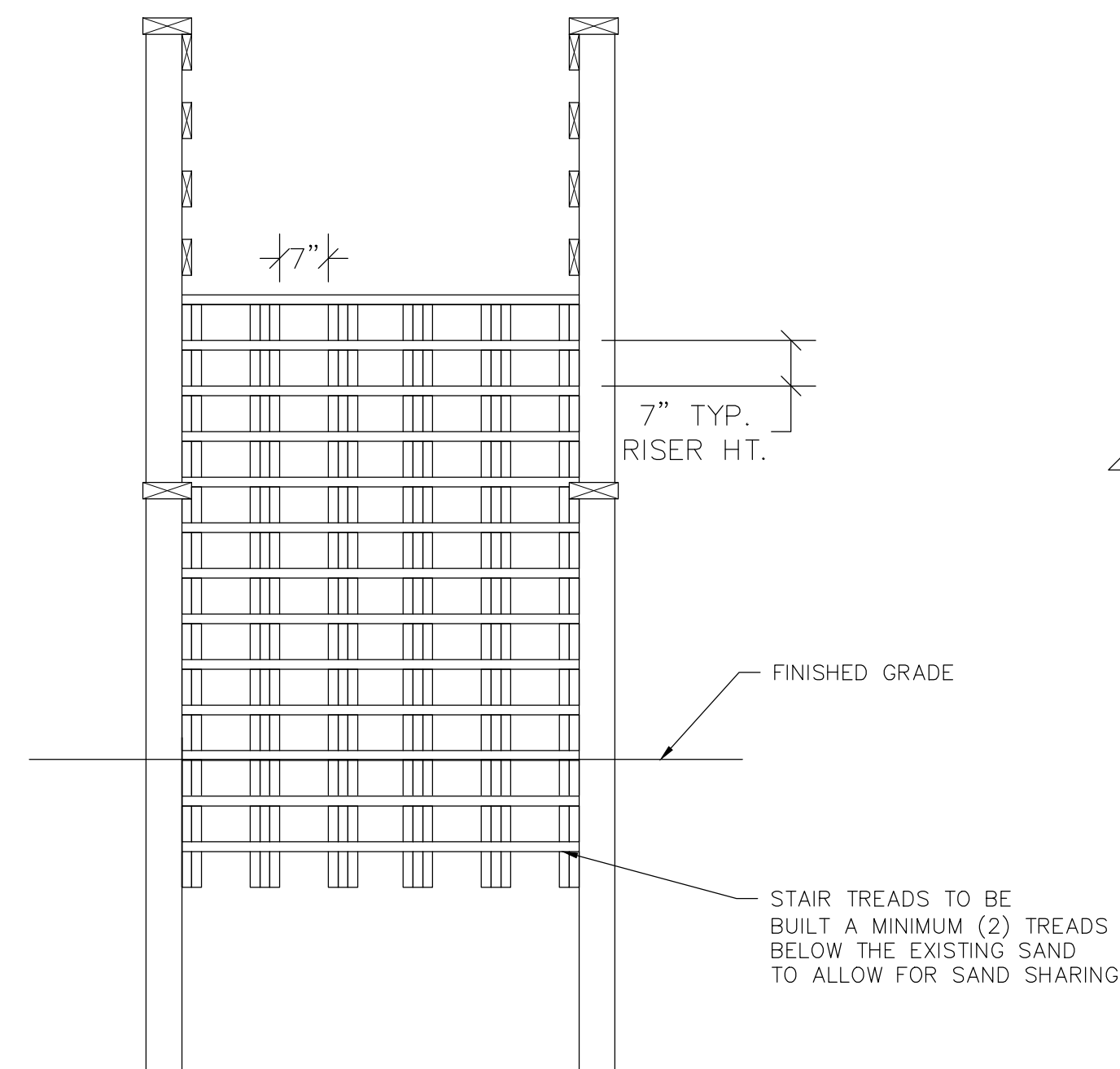
TYPICAL STRINGER SUPPORT DETAIL



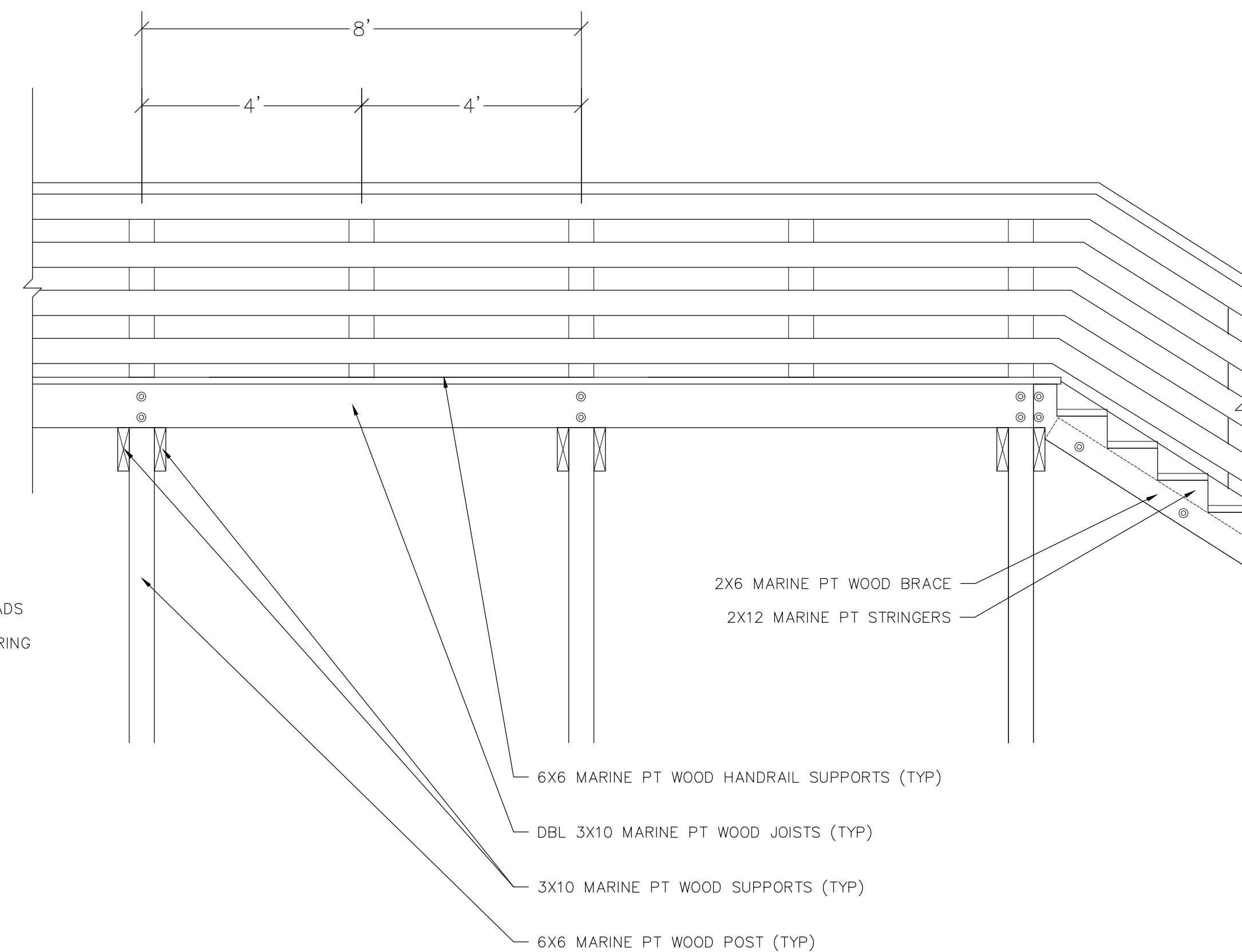
TYPICAL CROSSOVER FRAMING PLAN



TYPICAL CROSSOVER CROSS SECTION



TYPICAL STAIR ELEVATION



TYPICAL CROSSOVER ELEVATION

Crossover Details
JIA Crossovers
Jekyll Island, Georgia

Rev: 5/15/20
Date: 2/6/20
Scale: 1"=2'-0"
Sheet 1/4

