

Jekyll Island Authority Comprehensive Disability Accessibility and Assessment Plan

Prepared by the Georgia State Financing and Investment Commission,
State ADA Coordinator's Office

Executive Summary

On August 15, 2016, the Board of Directors of the Jekyll Island Authority (JIA) approved the *JIA Comprehensive Disability Accessibility and Assessment Plan* ("plan") for the stated purpose of promoting and enhancing access and inclusion for people with disabilities in recreation, leisure activities, and tourism offered by JIA.¹ The plan's project scope includes updating JIA's ADA compliance plan *and* identifying and implementing best practices for designing or adapting JIA's programs with the widest range of users in mind.

This report provides a status update on implementation of the plan. Its format follows the administrative framework established under Title II of the Americans with Disabilities Act (ADA) for evaluating the compliance of a public entity's programs, services, and activities under the statute.²

The report is divided into four sections:

- Section 1 provides an overview of Title II of the ADA and enumerates the statute's administrative requirements for state agencies.
- Section 2 updates JIA's ADA self-evaluation. Sections 1 & 2 also detail JIA's accessibility and compliance activities.
- Section 3 proposes a transition plan for structural modification of certain JIA facilities, and
- Section 4 recommends additional next steps for accessibility.

JIA has taken specific actions to ensure that the broad range of programs, services and activities it offers are usable and accessible to people with various disabilities. During the past year, JIA has engaged the disability community and community at large concerning disability access on Jekyll Island. The State ADA Coordinator's Office has conducted two community outreach sessions on behalf of JIA. These forums offered participants the opportunity to comment on disability access on Jekyll Island. Additionally, JIA established an on-line opportunity on its website for individuals to offer comments or suggestions for improving accessibility. The community engagement has been extremely beneficial, and JIA has initiated or completed several key accessibility projects in response to public feedback.

¹ <http://www.jekyllisland.com/jekyllislandwp/wp-content/uploads/2016/01/Minutes-Materials-8.15.16.pdf>. See Appendix A (Plan Outline).

² Title II directs state agencies to carry out specific methods of administration enumerated in its implementing regulations to ensure compliance with the Act's mandate, which include:

- Designation of an agency ADA Coordinator to establish a single line of responsibility and intra-agency coordination (28 C.F.R. 35.107(a));
- Provision of public notice of the agency's ADA-related activities (28 C.F.R. 35.106);
- Establishment and administration of the agency's ADA informal grievance procedure (28 C.F.R. 35.107);
- Development of the agency's ADA self-evaluation (28 C.F.R. 35.105); and
- Development of the agency's transition plan (28 C.F.R. 35.150).

JIA has met each of these administrative requirements.

Following is an activity summary of JIA's efforts since the onset of this project. These actions reaffirm JIA's commitment to accessibility.

Beach Access

JIA provides overall accessibility at several existing designated accessible beach access points, and is to be commended for its ongoing commitment and efforts to identify methods for wheelchair users to independently traverse the soft sand.³ It is also noteworthy that JIA provides beach wheelchairs upon request *at no cost* for individuals with disabilities.

Post Hurricane Irma, JIA has reconstructed the beach access crossover and ramp at public access points #32, #38 and #60 (Glory Boardwalk) to maintain and enhance accessibility. Glory Boardwalk previously had steps leading to the beach but the current conditions post hurricane allowed for the steps to be replaced with a ramp that may at times be adjacent to the hard packed sand dependent on tidal conditions. JIA has also created accessible maneuvering space at the end of existing mats at points #32 and #38 so wheelchair users are out of crowd circulation. The accessible beach access point and ramp at St. Andrews Beach provides access directly to the hard pack sand on the shore.

JIA is also willing to extend beach access mats across soft sand when JIA has advance notice of disability groups that are larger than the amount of beach going wheelchairs we have available (within the constraints of tidal fluctuations, manpower limitations or other naturally occurring beach conditions).

Lastly, during its June 19th meeting, the JIA Board approved construction of a new boardwalk/accessible crossover and beach overlook at public access point #26. This project will enable persons using mobility devices to have direct access to the hard-packed sand on the beach side. A construction schedule will be developed, but the project is delayed due to the effects of Hurricane Irma.

Program Accessibility (Non-Structural)

JIA has:

- established an arrangement with the American Sign Language Interpreters of the Glynn County School System to ensure sign language services are available when necessary for effective communication for individuals who are deaf;
- started the process to engage the ADA office and AccessGA to conduct a website assessment to ensure the accessibility of JIA's on-line content;
- started the process to establish an arrangement with AMAC-Accessibility For All to ensure alternate document formats when necessary;
- reviewed contracts and updated applicable contract language as necessary to ensure contractors and vendors meets their legal requirements to ensure disability access;
- incorporated accessibility items into JIA's checklist for temporary events; and
- established an ADA Grievance Procedure and Complaint Form located on the Jekyll Island Authority website under "Important Documents."

³ Hurricane Irma affected several public beach access points. At the time of this update, JIA is assessing its impact.

Facility Access

JIA has:

- procured \$1.6 million from the State's FY18 capital outlay budget to improve accessibility in the historic district;
- established procurement & contract criteria for new construction and alteration projects, and included accessibility and universal design principles in the RFP for the Mosaic's redesign;
- incorporated design review by the State ADA Coordinator's Office for construction projects; and
- started the design process of adding accessible parking spaces in the Beach Village to reduce walking distance for Main Street, as well as developing the plan to increase the number of accessible spaces (over the minimum) for the final development phase of the Beach Village.

Additionally, the State ADA Coordinator's Office evaluated 37 existing structures/facilities operated by JIA in an ongoing review of program accessibility.⁴ With very few exceptions, these structures and facilities are accessible to users with disabilities. Still, although most of these facilities are generally accessible, a suggested list of items has been developed to improve accessibility and better ensure compliance with Title II.⁵ The State ADA Coordinator's Office submitted an FY19 funding request in the amount of \$1,538,000 to the Governor's Office of Planning and Budget for accessibility-related improvements to JIA facilities.

Conclusion

JIA will continue to work with the State ADA Coordinator's Office and develop a timeline for completing the action items identified in this report.

⁴ Structures and facilities surveyed include: The Welcome Center, Turtle Center, Airport, Public Beach Access Points, Campgrounds, Great Dunes Playground, Boating Facilities, and Fishing Facilities.

⁵ JIA will consider these items in a manner consistent with its ADA transition planning.



**Comprehensive Disability
Accessibility Assessment and
Improvement Plan Update**

**State ADA Coordinator's Office
January 16, 2018**

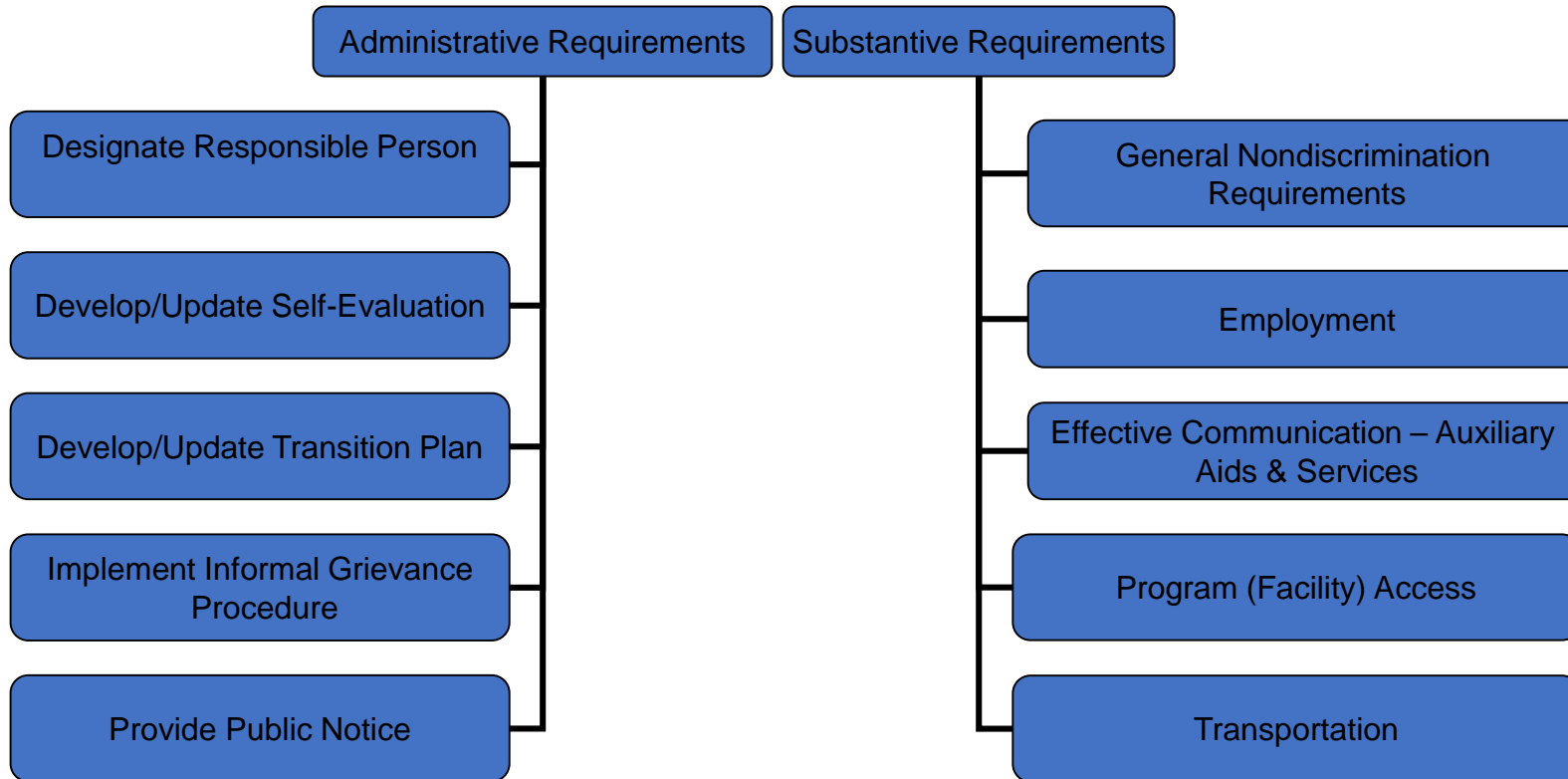


Plan Objectives

- Promote and enhance access and inclusion for people with disabilities;
- Address beach access issues collaboratively;
- Update the JIA's accessibility/ADA compliance plan;
- Identify and implement best practices for designing and/or adapting JIA's programs with the widest range of users in mind; and
- Provide ongoing technical assistance to JIA's key ADA personnel for the maintenance and updating of the plan.



Planning for ADA Compliance





Planning for ADA Compliance

- Gather JIA's key personnel for coordination of the plan and orientation to roles;
- Identify each of the JIA activities, events, and facilities open to the general public;
- Conduct outreach activities with the disability community and general public to obtain initial feedback; and
- Identify critical or time sensitive accessibility/ADA issues.



Outreach

- Engaged the disability community and community at large concerning disability access on Jekyll Island;
- Conducted two community outreach sessions on behalf of JIA. These forums offered participants the opportunity to comment on disability access on Jekyll Island;
- Established an ongoing on-line survey on its website for individuals to offer comments or suggestions for improving accessibility;
- Outreach will be ongoing.



Beach Access

Flexibility of Approach

Other critical priorities, including environmental and endangered species protection laws, must be considered when implementing accessibility solutions.

Under these circumstances, flexibility of approach is critical. In the *spirit of collaboration*, JIA engages stakeholders from environmental agencies and organizations, the accessibility profession, and the disability community to develop a cross-disciplinary approach to address beach access challenges.



Beach Access

- Reconstructed the beach access crossover and ramp at public access points #32, #38 and #60 (Glory Boardwalk) to maintain and enhance accessibility;
- Maintained the accessible beach access point and ramp at St. Andrews Beach provides access directly to the hard pack sand on the shore;
- Implemented programmatic solutions, including the provision of beach wheelchairs at no-cost and extension of beach access mats across soft sand when JIA has advance notice of large disability groups (within the constraints of tidal fluctuations, manpower limitations or other naturally occurring beach conditions); and
- Approved construction of a new boardwalk/accessible crossover and beach overlook at public access point #26.



Program Accessibility (Non-Structural)

- Established an arrangement with the American Sign Language Interpreters of the Glynn County School System to ensure sign language services are available when necessary for effective communication for individuals who are deaf;
- Started the process to engage the ADA office and AccessGA to conduct a website assessment to ensure the accessibility of JIA's on-line content;
- Started the process to establish an arrangement with AMAC-Accessibility For All to ensure alternate document formats when necessary;
- Reviewed contracts and updated applicable contract language as necessary to ensure contractors and vendors meets their legal requirements to ensure disability access; and
- Incorporated accessibility items into JIA's checklist for temporary events.



Facility Access

- Procured \$1.6 million from the State's FY18 capital outlay budget to improve accessibility in the historic district;
- Established procurement & contract criteria for new construction and alteration projects, and included accessibility and universal design principles in the RFP for the Mosaic's redesign;
- Incorporated design review by the State ADA Coordinator's Office for construction projects; and
- Started the process of adding accessible parking spaces in the Beach Village to reduce walking distance for Main Street, as well as developing the plan to increase the number of accessible spaces (over the minimum) for the final development phase of the Beach Village.



Facility Access

Additionally, the State ADA Coordinator's Office evaluated 37 existing structures/facilities operated by JIA in an ongoing review of program accessibility in various areas.

Beach Access	Picnic Areas	Golf Courses
Boating	Airport	Tennis Center
Sea Turtle Center	Campgrounds	Bike Trails
Playgrounds	Fishing Areas	Summer Waves



FY19 ADA Capital Outlay Request

Jekyll Island Authority

\$ 1,538,000

Priority	Project Name	ADA Funds Requested	Project Category	Expected Economic Service Life of Project
1.	Campground Campsites, Parking, Laundry, Showers & Restrooms	\$310,000	Program Access Concern	10-15 years
2.	Beach Access No.26 Accessible Restrooms	\$260,000	Public Restroom Accessibility	10-15 years
3.	Beach Access No.42 Restrooms	\$260,000	Public Restroom Accessibility	10-15 years
4.	Summer Waves Park - Lazy River Entry to this attraction	\$200,000	Program Access Concern	20-30 years
5.	St. Andrews & South Dunes Picnic Areas Parking, Site Access and Picnic Area	\$120,000	Program Access Concern	10-15 years
6.	Beach Access No.32 access matting with constructed walkway	\$120,000	Program Access Concern	10-15 years
7.	Welcome Center Various Facility Access Improvements	\$60,000	Program Access Concern	10-15 years
8.	Georgia Sea Turtle Center Parking and Various Facility Access Improvements	\$80,000	Program Access Concern	10-15 years
9.	Playground Facility Access Improvements	\$45,000	Program Access Concern	10-15 years
10.	Historic Wharf Parking	\$65,000	Public Parking	15-20 years
11.	Beach Village Street Parking	\$18,000	Public Parking	15-20 years
TOTAL		\$1,538,000		



Next Steps

- Conduct a website assessment to ensure the accessibility of JIA's on-line content;
- Establish an arrangement to ensure availability of alternate document formats when necessary;
- Update applicable contract language as necessary to ensure contractors and vendors meet their legal requirements to ensure disability access;
- Provide accessibility training to staff; and
- Approve updated transition plan.



Thank you

Questions or Comments